

Horizon

ROTARY DIE-CUT SYSTEM

RD-N4055 RD-N4055DM

New rotary die-cut system
increases production efficiency.

Horizon

IMPROVE THE QUALITY AND PRODUCTIVITY OF THE DIE-CUTTING PROCESS.

Efficient production with new separator and card stacker for labor saving operation.



BENEFITS

HIGH EFFICIENCY

Die cutting, waste separation and stacking in one pass for efficient production.

APPLICATION FLEXIBILITY

Business cards, greeting cards, labels and light packages... A wide range of applications can be processed.

HIGH PRODUCTIVITY

Maximum 6,000 sheets can be processed. In the case of 21-up round corner business card application, it can be processed at 126,000 cards per hour.

SIMPLE AND EASY OPERATION

Simple and easy operation without relying on a skilled operator.

REDUCED DIE COST

Uniquely designed servo motor controlled "Repeat Register" feature allows multiple-up applications from a single-up die to minimize die cost.

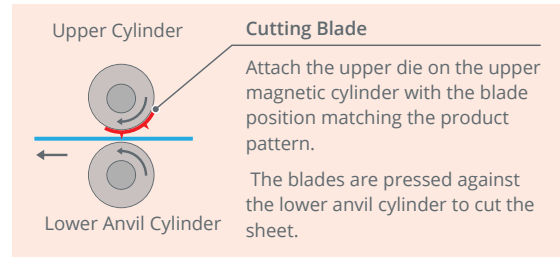
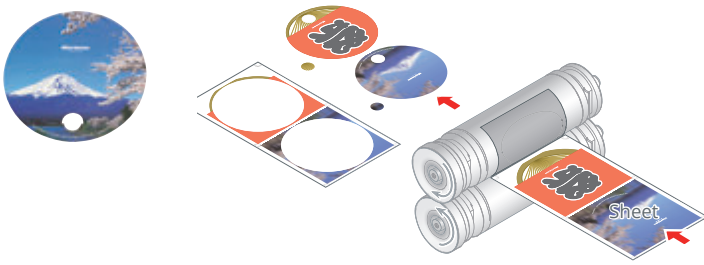
SPACE SAVING

Rotary Die-cutter designed to meet the growing demand for short run product. The rotary die-cutters are ruggedly constructed, yet compact compared to normal die cutters.

FLEXIBLE CONFIGURATION

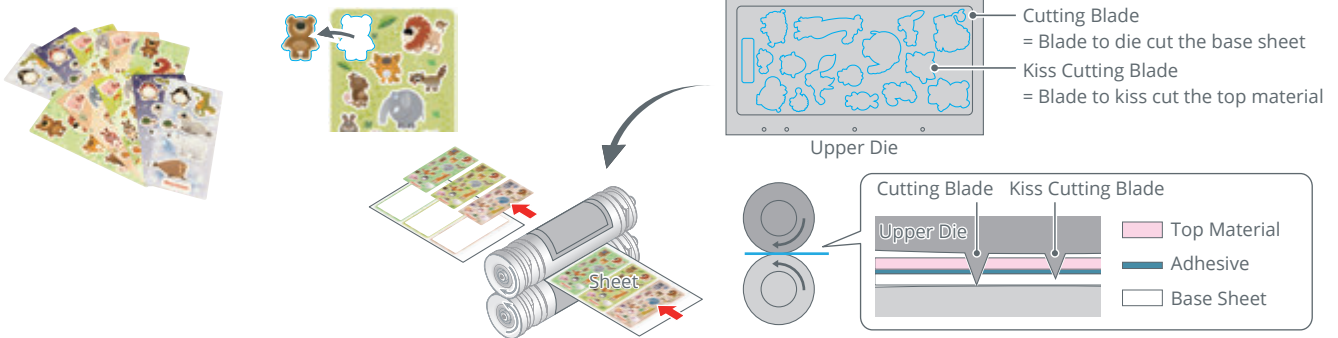
Various delivery options are available to process a wide range of applications. Simple delivery conveyor, card stacker and sheet stacker can be selected depending on needs.

DIE-CUTTING MECHANISM



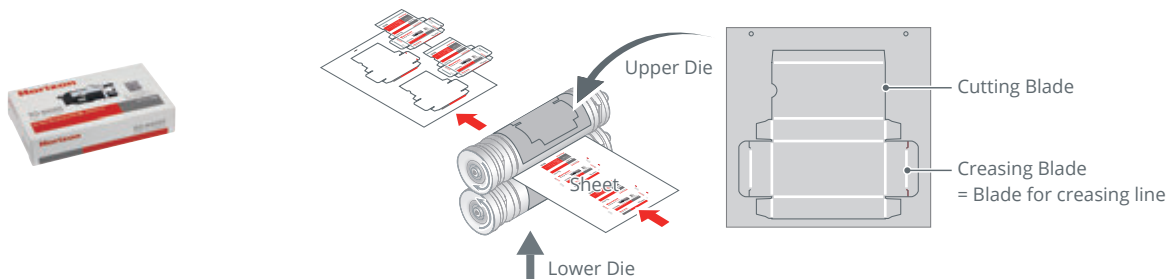
KISS CUTTING

Die-cutting and Kiss cutting can be performed at the same time by using a die which has two different blade heights. Ideal for making stickers and labels.



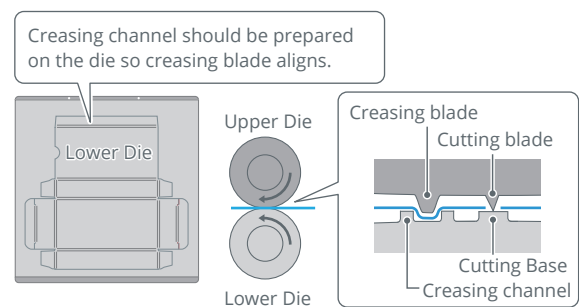
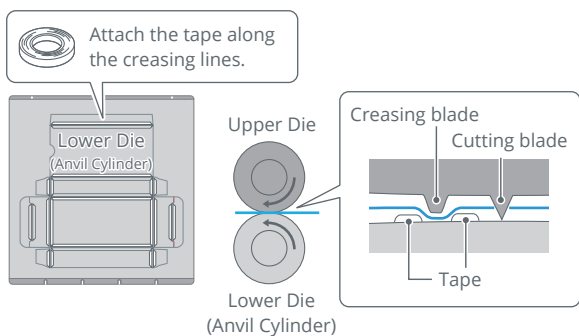
CREASING

Crease can be achieved to avoid image cracking. Suitable for boxes, pocket folders and greeting cards which require additional folding processes after die cutting.



RD-N4055

RD-N4055DM

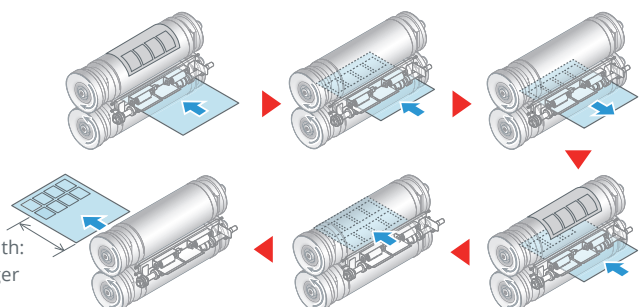


REPEAT REGISTER

Repeat register function enables the running of multiple up imposed applications with a smaller die to reduce die cost. (Up to 8 repeats)



Required Gripping Width:
170 mm (6.69") or longer



DETAILS FOR EACH DEVICE.



CSD-40RD
Card Stacker

SPC-N4055
Separator

RD-N4055
Rotary Die Cutter

1 TOUCH PANEL

Both setup and control can be done through the intuitive touch screen. After mounting the upper and lower die, the system can be set up by simply inputting sheet size and product size. The graphical illustrations on the screen are simple and easy to understand.



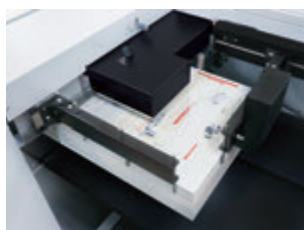
3 TRANSPORT SECTION

Sheets are registered by vacuum belt and position is firmly secured with gripper rollers for accurate and consistent register. Servo motor driven gripper rollers ensure the die cut position without effecting processing speed. The optional alignment detection sensor ADS-N4055 detects the alignment error for additional quality control.



2 FEED SECTION

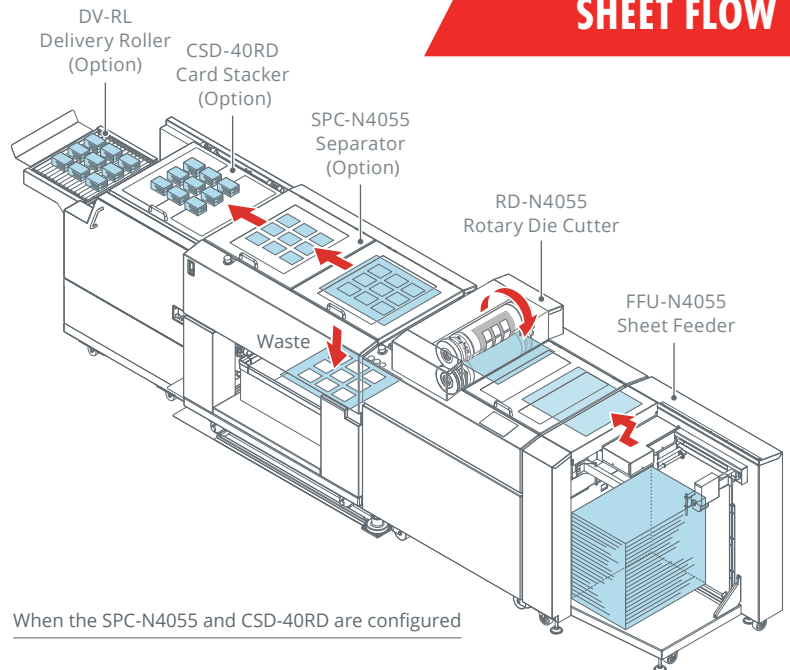
Vacuum belt feeding enables superior feeding with easy setup and operation. An ultrasonic sensor is used for double feed detection on a wide range of substrates. The optional code reader BR-N4055 enables job separation for easy handling.



SHEET FLOW



FFU-N4055
Sheet Feeder



When the SPC-N4055 and CSD-40RD are configured

4 DIE CUTTING SECTION

Rigid magnetic upper roller and solid lower anvil cylinder ensure high quality die cutting. Uniquely designed die cutting section enables easy and quick die setting.



Attaching the Lower Die

The lower die can be attached on the lower cylinder to make crease lines.

- RD-N4055
Prepare the lower die by making grooves on the stainless sheet using a tape. The lower die is attached on the anvil cylinder.
- RD-N4055DM
The lower die is attached on the lower magnetic cylinder.



5 SEPARATOR SPC-N4055 OPTION

The connected separator removes the waste from the finished product and delivers to the waste bin. The newly designed suction transport belt ensures stable transport of cut product.



6 DELIVERY SECTION OPTION

CSD-40RD *Connected to the SPC-N4055

The optional card stacker can stack up to 40 mm in height for efficient and labor saving production.



SPC-N4055 + CSD-40RD + DV-RL

SPC-N4055 *Without the CSD-40RD

SPC-N4055 is equipped with a delivery conveyor to output the products after separation. The angle of the receiving conveyor can be adjusted to receive a wide range of products.



Delivery section of SPC-N4055

OPTIONS.

Selective options for the delivery unit.

SPC-N4055 SEPARATOR

- Newly designed separation module which includes stripper guides, blowing air, and knock-out pistons ensure clean separation of the product from the waste.
- Suction belt transportation provides smooth consistent transport of cut product.

COUNT SENSORS

Up to five sensors can be used to count the cut pieces to ensure all products are delivered. The counted number can be verified on the touch screen to check which pieces are missing.

INFEED SECTION

The infeed height can be adjusted for smooth sheet transfer from the RD-N4055. Air blowing feature assists in separating the sheets from the die.



DV-RL
Delivery Roller

RD-N4055
Rotary Die Cutter

FFU-N4055
Sheet Feeder

SPC-N4055
Separator

DELIVERY SECTION

Die cut products are neatly stacked on the delivery conveyor. The conveyor speed can be adjusted for smooth delivery for a wide range of applications.



Prepare the compressor to meet the following specifications:

SPECIFICATIONS FOR COMPRESSOR WITH ST-4055

Rated Output of Prime Mover (Reference)	0.75 kW
Maximum Operating Pressure	0.95 MPa
Minimum Required Pressure	0.6 MPa or more
Minimum Discharge	85 Liters per minute
Type	Oil-free Type

ST-4055 STACKER

- ST-4055 stacks a wide range of substrates and applications such as thin sheets or complicated shapes which can be difficult to separate.
- Vacuum belt transport ensures smooth delivery without separating die cut pieces.
- Offset stacking function is available by pre-set number.

- Delivery tray slides out for easy removal of finished pile.
- Maximum stack capacity: 170 mm or 6.69"

*To connect the ST-4055, remove the SPC-4055.



ST-4055
Stacker

RD-N4055
Rotary Die Cutter

FFU-N4055
Sheet Feeder

Prepare the compressor to meet the following specifications:

SPECIFICATIONS FOR COMPRESSOR WITH ST-4055

Rated Output of Prime Mover (Reference)	0.75 kW
Maximum Operating Pressure	0.95 MPa
Minimum Required Pressure	0.6 MPa or more
Minimum Discharge	85 Liters per minute
Type	Oil-free Type

BT-4055 RECEIVING TRAY

- BT-4055 is a bucket receiving tray to deliver non-separated die cut sheets in on the receiving tray.
- The angle of the receiving tray can be adjusted for smooth delivery.



BT-4055
Bucket Receiving Tray

RD-N4055
Rotary Die Cutter

FFU-N4055
Sheet Feeder

OPTIONS.

Optional unit for the SPC-N4055 for increased production efficiency.

CSD-40RD CARD STACKER

- The CSD-40RD stacks the pre-set number of sheets for easy handling of small applications such as business cards, tags, and door hangers.
- Count sensors ensure reliable offset stacking.
- The delivery unit enables easy switching from the separator SPC-N4055 to the card stacker CSD-40RD for a wide range of applications.

COUNT SENSORS

Up to five count sensors can be used for checking the number of finished pieces. If the counted number of pieces does not match with the pre-set number, the system automatically stops and the error position can be checked on the touch screen of the RD-N4055.

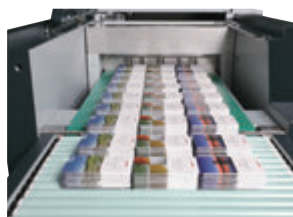


*When the CSD-40RD is connected, the count sensors on the SPC-4055 are not activated.



DELIVERY SECTION

The cut products are stacked on the delivery conveyor by a pre-set number of sheets. The stack push out function allows the operator to save time for collecting and inspecting products at the delivery section. The delivery belt speed can be adjusted depending on the size of die-cut products.



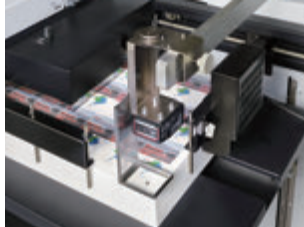
OPTIONS.

Performance Enhancing Options.

For FFU-N4055 Sheet Feeder

BR-N4055 CODE READER

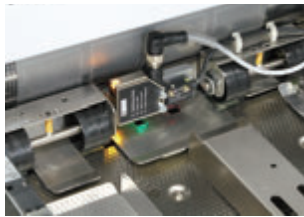
- Job separation by reading a barcode for easy and labor saving production.
- The BR-N4055 cannot be used when the ST-4055 is connected.



For RD-N4055 / RD-N4055DM Rotary Die Cutter

MS-3346 MARK SENSOR

- The mark sensor reads the mark printed on the lead edge of the sheet. If the printing image shifts, the position is automatically corrected to process the sheet accurately.



ADS-N4055 ALIGNMENT DETECTION SENSOR

- The sensor checks if the sheet is transported along the register guide. If the sheet is not aligned with guide, the system stops before feeding the sheets into the die cutting section.



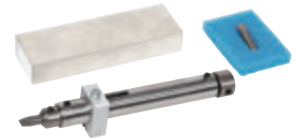
LDK-4055 LOWER DIE TOOL KIT

- This kit includes the necessary tools and materials to help prepare the lower die efficiently.



RD-NP NICK PUNCH

- The nick punch is a tool to make nicks on the die easily without damaging the die.



For SPC-N4055 Separator

SPC-20UP 5×4 ROLLER FOR BUSINESS CARDS

- This unit holds the cut pieces of small applications such as business cards on the SPC-N4055 for smooth transportation.
- For imposition of cards: 5 x 4



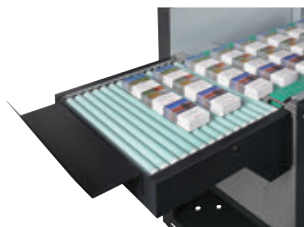
SPC-21UP 3×7 ROLLER FOR BUSINESS CARD

- This unit holds the cut pieces of small applications such as business cards on the SPC-N4055 for smooth transportation.
- For imposition of cards: 3 x 7



DV-RL DELIVERY ROLLER

- Additional roller conveyor for the SPC-N4055 and CSD-40RD.

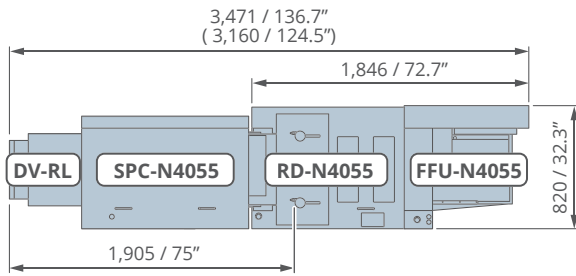


SPECIFICATIONS.

Machine Dimensions. (Unit: mm or inch)

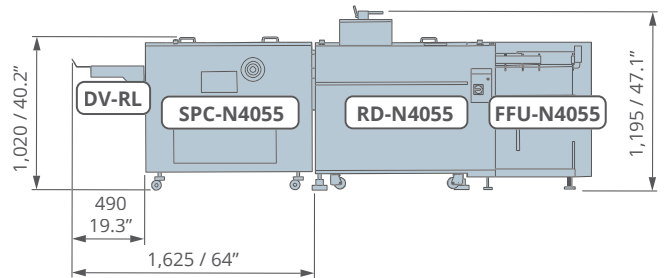
RD-N4055 + SPC-N4055

(Top View)



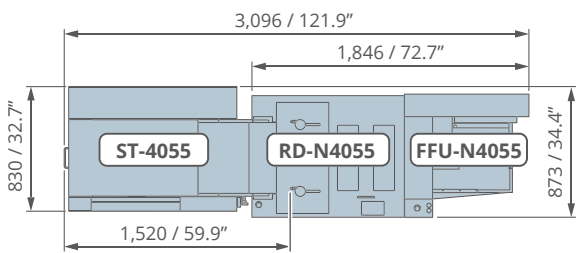
*Inside () is the dimension when using the normal tray.

(Front View)

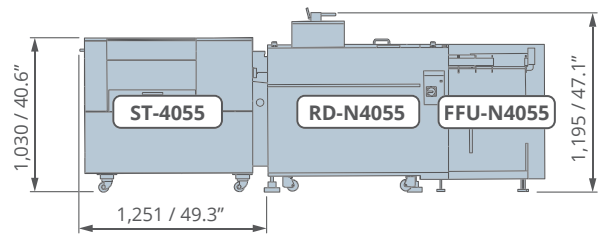


RD-N4055 + ST-4055

(Top View)

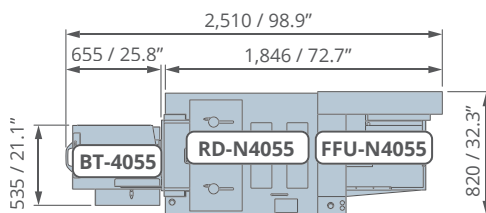


(Front View)

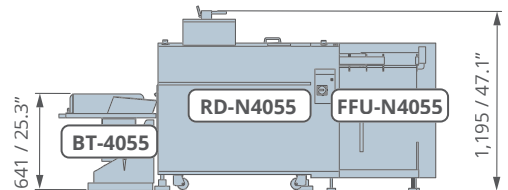


RD-N4055 + BT-4055

(Top View)

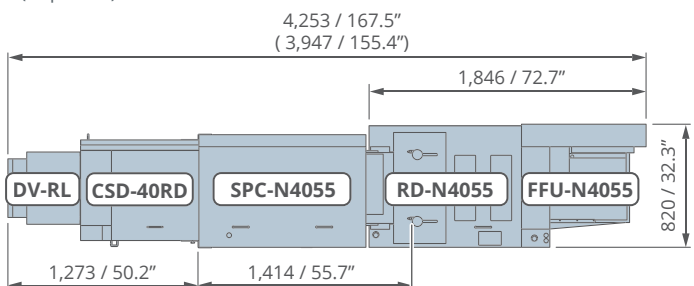


(Front View)

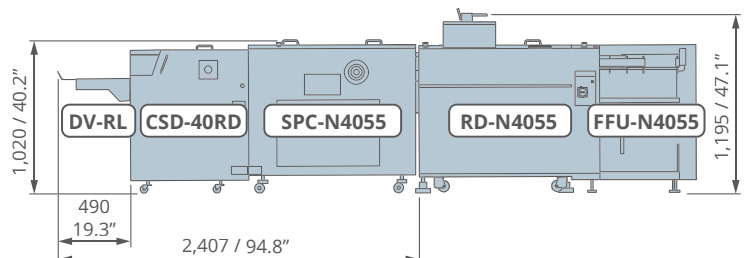


RD-N4055 + SPC-N4055 + CSD-40RD

(Top View)

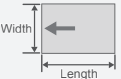


(Front View)



*Inside () is the dimension when using the normal tray.

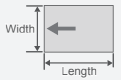
RD-N4055

Sheet Feeding System	Air Suction Feed Belt	
Sheet Size (Before Processing)	 Max. W400 x L550 mm or W15.740" x L21.650" Min. W200 x L275 mm or W7.875" x L10.830"	
Cut Product Size	With SPC Without CSD (*1)	Max. W376 x L530 mm or W14.803" x L20.866" Min. W80 x L50 mm or W3.15" x L1.969" Min. W50 x L80 mm or W1.969" x L3.15"
	With CSD (*2)	Max. W297 x L210 mm or W11.693" x L8.268" A4 Landscape Min. W80 x L50 mm or W3.15" x L1.969" Min. W50 x L80 mm or W1.969" x L3.15"
		Max. W384 x L530 mm or W15.118" x L20.866" Min. Depending on die shape
	Without SPC With BT (*3)	Size received on the bucket receiving tray Max. W400 x L550 mm or W15.748" x L22.047" Min. W200 x L275 mm or W7.875" x L10.830"
	Without SPC With ST (*4)	Max. W384 x L530 mm or W15.118" x L20.866" Min. Depending on die shape Size received on the stack table Max. W400 x L550 mm or W15.748" x L22.047" Max. W200 x L275 mm or W7.875" x L10.830"
Processed Material	Normal paper, Coated paper, Cardboard The sheets below cannot be processed: Sheet whose back side is laminated (covered with polypropylene) Plastic film	
Material Thickness	RD-N4055	
	127.9 to 400 gsm Die Cutting: Max. 0.5 mm or 0.019" (In case of blade height: 0.8 mm or 0.031") Max. 0.3 mm or 0.011" (In case of blade height: 0.6 mm or 0.023") Creasing: Max. 0.4 mm or 0.015" (In case of blade height: 0.8 mm or 0.031")	
Feeder Stack Height	RD-N4055DM	
	127.9 to 400 gsm Die Cutting: Max. 0.5 mm or 0.019" Creasing: Max. 0.3 mm or 0.011"	
Die Size - Upper Die	Maximum Feeder Stack Height: 500 mm or 19.68" Max Load: 100 kg or 220.5 lb	
Upper Cutting Blade Height	Max. W400 x L560 mm or W15.748" x L22.047" Min. W160 x L100 mm or W6.30" x L3.937"	
Production Speed	RD-N4055: 0.6 or 0.8 mm / 0.0236" or 0.0315" RD-N4055DM: 0.8 mm / 0.0315"	
Voltage/ Frequency	Die cut roller 6,000 cycles per hour (When the ST-N4055 is connected, the number of processing sheets is 3,000 sheets per hour.)	
Machine Dimensions	Single Phase 200 to 240 V, 50 or 60 Hz Single Phase 230 to 240 V, 50 or 60 Hz (For the machine with CE marking) Single Phase 208 V, 60 Hz (Only for the United States)	
	With SPC Without CSD (*1)	W3,471 (3,160) x D820 x H1,195 mm W136.7" x D32.3" x H47.1" *Inside () is the dimension when using the normal tray.
	With CSD (*2)	W4,253 x D820 x H1,195 mm or W167.5" x D32.3" x H47.1"
	Without SPC With BT (*3) Without SPC With ST (*4)	W2,510 x D820 x H1,195 mm or W98.9" x D32.3" x H47.1" W3,309 x D830 x H1,195 mm or W121.9" x D32.7" x H47.1"
Machine Weight	With SPC Without CSD (*1)	1,095 kg or 2,414.06 lb
	With CSD (*2)	1,165 kg or 2,568.82 lb
	Without SPC With BT (*3)	765 kg or 1,686.54 lb
	Without SPC With ST (*4)	1,026 kg or 2,261.943 lb

Recommended Air Source *Prepare the air compressor to meet the specifications.	RD-N4055	
	With SPC Without CSD (*1)	Rated Output of Prime Mover (Reference): 0.75 kW Maximum Operating Pressure: 0.95 MPa Minimum Required Pressure: 0.6 MPa or more Minimum Discharge: 85 Liters per minute Type: Oil-free Type
	With CSD (*2)	
	Without SPC With BT (*3)	Rated Output of Prime Mover (Reference): 0.75 kW Maximum Operating Pressure: 0.95 MPa Minimum Required Pressure: 0.6 MPa or more Minimum Discharge: 20 Liters per minute Type: Oil-free Type
	Without SPC With ST (*4)	Rated Output of Prime Mover (Reference): 0.75 kW Maximum Operating Pressure: 0.95 MPa Minimum Required Pressure: 0.6 MPa or more Minimum Discharge: 85 Liters per minute Type: Oil-free Type
	RD-N4055DM	
	With SPC Without CSD (*1)	Rated Output of Prime Mover (Reference): 0.75 kW Maximum Operating Pressure: 0.95 MPa Minimum Required Pressure: 0.6 MPa or more Minimum Discharge: 85 Liters per minute Type: Oil-free Type
	With CSD (*2)	
	Without SPC With ST (*4)	Rated Output of Prime Mover (Reference): 0.75 kW Maximum Operating Pressure: 0.95 MPa Minimum Required Pressure: 0.6 MPa or more Minimum Discharge: 85 Liters per minute Type: Oil-free Type


- *1: With SPC, without CSD: FFU-N4055 + RD-N4055/RD-N4055DM + SPC-N4055 + DV-RL
- *2: With CSD: FFU-N4055 + RD-N4055/RD-N4055DM + SPC-N4055 + CSD-40RD + DV-RL
- *3: Without SPC, with BT: FFU-N4055 + RD-N4055/RD-N4055DM + BT-4055
- *4: Without SPC, with ST: FFU-N4055 + RD-N4055/RD-N4055DM + ST-4055

ST-4055

Compatible Machines	RD-N4055 / RD-N4055DM
Sheet Size	 Max. W400 x L550 mm or W15.74" x L21.65" Min. W200 x L275 mm or W7.88" x L10.83"
Sheet Weight Range	Normal Paper, Coated Paper, Cardboard Material Thickness: Max. 0.5 mm or 0.02" 127.9 to 400 gsm
Production Speed	Offset Stacking: 3,000 sheets per hour In the stacking speed reduction mode: 3,000 sheets per hour Straight Stacking without speed reduction mode: 6,000 sheets per hour (This production speed is limited according to the sheet thickness, sheet size, and the number of nicks.)
Stack Capacity	Maximum Stack Height: 170 mm or 6.69" Max Load. 48 kg or 105.8 lb
Voltage/ Frequency	Single Phase 200 to 240 V, 50 or 60 Hz Single Phase 208 V, 60 Hz (Only for the United States)
Machine Dimensions	W1,520 x D830 x H1,030 mm or W58.7" x D32.7" x H40.6"
Machine Weight	About 306 kg or 674.0 lb
Recommended Air Source	Mover(Reference): 0.75 kW Maximum Operating Pressure: 0.95 MPa, 137.7 psi Minimum Required Pressure: 0.55 MPa or more, 79.8 psi or more Minimum Discharge: 85 Liters per minute, 3.01 cfm Type: Oil-free Type

*The optional BR-N4055 cannot be used when connecting the ST-4055.

CSD-40RD

Compatible Machines	SPC-N4055
Sheet Size	 Max. 297 x 210 mm or 11.69" x 8.26" A4 Landscape Min. 80 x 50 mm or 3.15" x 1.97" 50 x 80 mm or 1.97" x 3.15"
Production Speed	Based on the RD-N4055
Voltage/ Frequency	Single Phase 200 to 240 V, 50 or 60 Hz (Supplied from the SPC-N4055)
Machine Dimensions	W1,273 x D820 x H1,020 mm or W50.2" x D32.3" x H40.2" *When the optional DV-RL is installed
Machine Weight	118 kg or 260.0 lb

MORE AT
HORIZON.CO.JP



Horizon

Horizon International Inc.

1601 Asahi, Shinasahicho, Takashima,
Shiga, 520-1501, Japan
Phone : +81-740-25-4570
Fax : +81-740-25-5820
www.horizon.co.jp

Horizon GmbH

Pascalstrasse 20
25451 Quickborn / Germany
Phone : +49 4106 8042-0
Fax : +49 4106 8042-199
www.horizon.de