

Horizon

CUTTING

APC-610

User-friendly,
Programmable Cutter.



ADVANCED PROGRAM FOR EASY SET-UP.

Compact hydraulic cutting system with accurate cutting quality and simple operation.



OPERATOR SAFETY

STANDARD EQUIPPED AREA SENSORS

If the area sensors detect any objects, the cutting motion will stop immediately. These sensors meet the high level of safety specified in Category 4 according to ISO13849-1.

DOUBLE SAFETY CIRCUIT

The system is further equipped with a hard-wired secondary safety interrupt for operator safety.

BENEFITS

HIGHT QUALITY

Hydraulic clamping and cutting mechanism ensures accurate cutting quality. Servo motor driven backgauge for accurate positioning.

USER-FRIENDLY OPERATION

The color touchscreen is intuitive and icon-based for user-friendly operation. The Operation, Setting and Information Screens are used for efficient and accurate operation.

SAFETY OPERATION

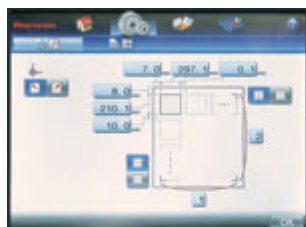
The APC-610 is activated only when the two cut buttons are simultaneously pressed. Also, if the standard equipped area sensors detect any object, the cutting motion will stop immediately.

MANAGE YOUR BINDERY WITH HORIZON'S BINDERY CONTROL SYSTEM

The system can be enhanced with automated workflow from upstream to post-press with iCE LiNK, which uses cloud technology, Horizon's post-press management system.

1 CONTROL PANEL

The large color touchscreen provides intuitive operation. The Simple Program Setting screen displays sheet rotating direction and cutting order graphically.



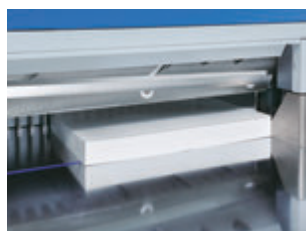
3 BACKGAUGE

The servo-motor driven backgauge assures accurate positioning and repeatability for consistent quality production.



2 KNIFE

Maximum cutting width is 610 mm or 24.0", maximum cutting height is 100 mm or 3.39". The cutting knife is made of special steel ensuring consistently high standard cutting quality for a prolonged period of time.



4 KNIFE ANGLE ADJUSTING LEVER

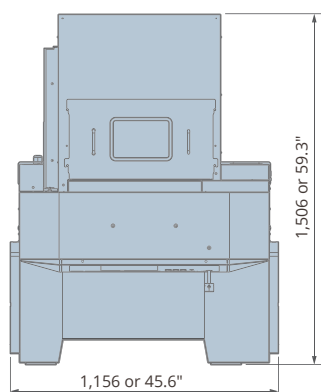
Knife angle and cutting depth adjustments are easily done on the front side of the cutter.



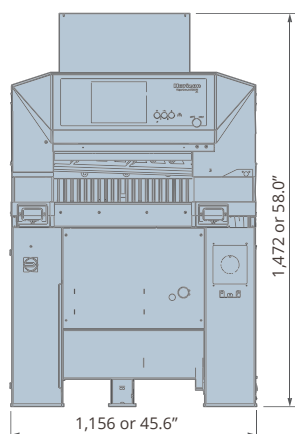
SPECIFICATIONS.

Machine Dimensions (Unit: mm or inch)

(Top View)



(Front View)



APC-610		
Cutting Width		Max. 610 mm or 24.0"
Cutting Height		Max. 100 mm or 3.93" (95 mm or 3.74" using the support plate)
Cutting Depth		Max. 620 mm or 24.4" Min. 25 mm or 0.98" (65 mm or 2.56" using the support plate)
Clamp System and Pressure	Hydraulic Powered 5 to 20 kN or 500 to 2,000 kgf	
Job Memory	99 Steps, 200 Jobs	
Push-out Length	20 to 150 mm or 0.785" to 5.905" Adjustable	
Cutting Speed	3.8 seconds per cycle	
Voltage/Frequency	3-Phase 200 to 220 V, 50 or 60 Hz 3-Phase 380 / 400 / 415 V, 50 or 60 Hz Single phase 200 to 220 V, 50 or 60 Hz	
Machine Dimensions	W1,156 × D1,506 × H1,472 mm or W45.6" × D59.3" × H58.0"	

*The machine design and specifications are subject to change without any notice.

*Specifications may vary depending on the job, paper quality, environmental influences, and various other factors. Please do a test run before starting production.

MORE AT
HORIZON.CO.JP



Horizon

Horizon International Inc.

1601 Asahi, Shinasahicho, Takashima,
Shiga, 520-1501, Japan
Phone : +81-740-25-4570
Fax : +81-740-25-5820
www.horizon.co.jp

Horizon GmbH

Pascalstrasse 20
25451 Quickborn / Germany
Phone : +49 4106 8042-0
Fax : +49 4106 8042-199
www.horizon.de